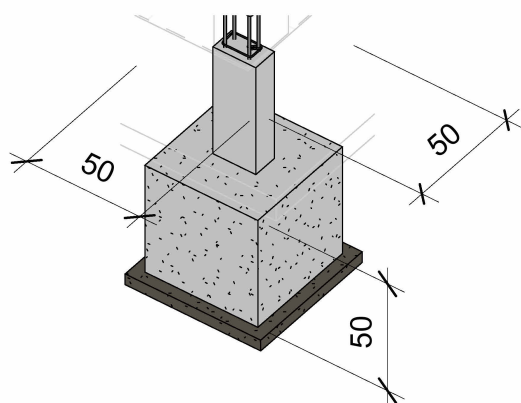
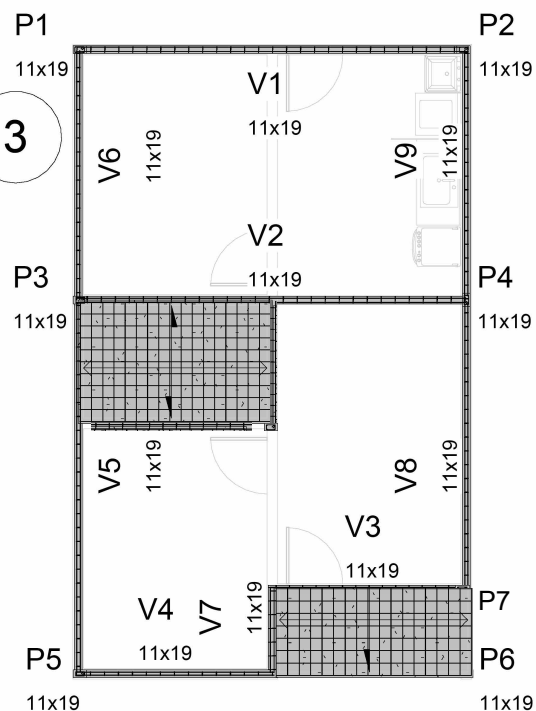


1 **Locação**
1 : 75



3 **Detalhe Bloco**



2 **Pilares e Vigas**
1 : 100

OBRA:
PROJETO MCMV - FNHIS

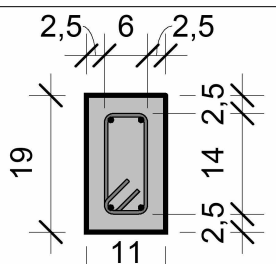
ESTRUTURAL

CONTEÚDO DA PRANCHA:
LOCAÇÃO E DETALHES

DATA:
08/05/2025

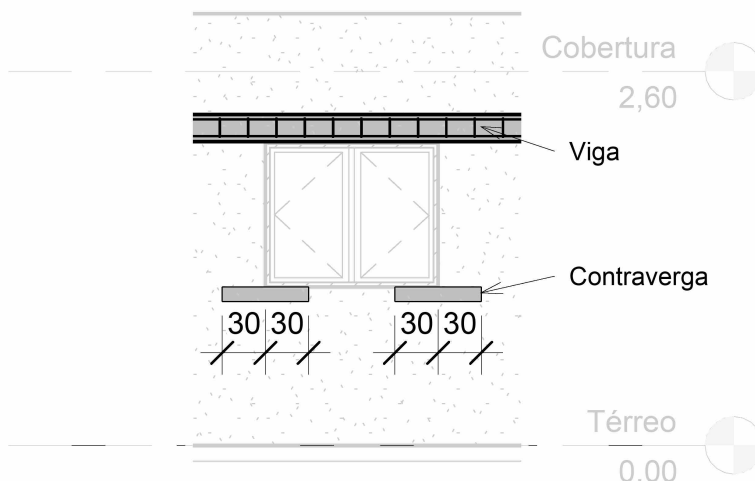
Nº DO PROJETO:
005

P1
/ 04



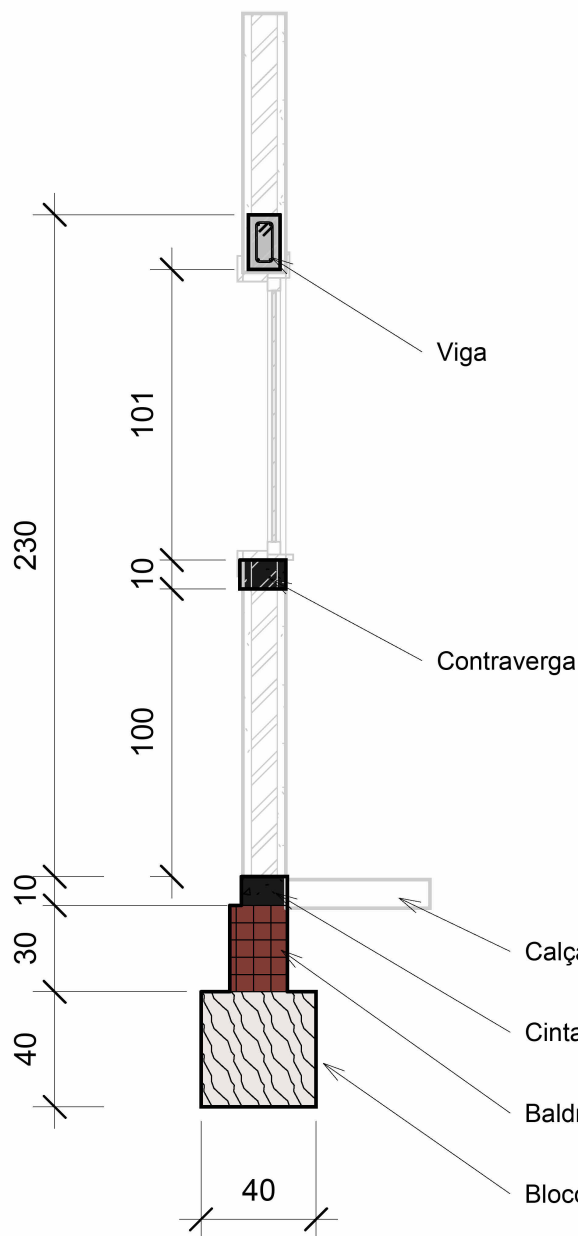
1 Pilar/Viga

1 : 10



3 Vergas

1 : 50



4 Detalhe Fundação

2 Detalhe Estrutura

1 : 25

OBRA:
PROJETO MCMV - FNHIS

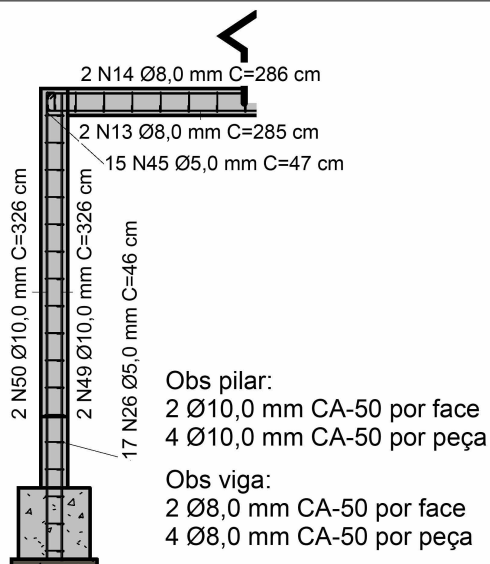
ESTRUTURAL

CONTEÚDO DA PRANCHA:
DET ESTRUTURA

DATA:
08/05/2025

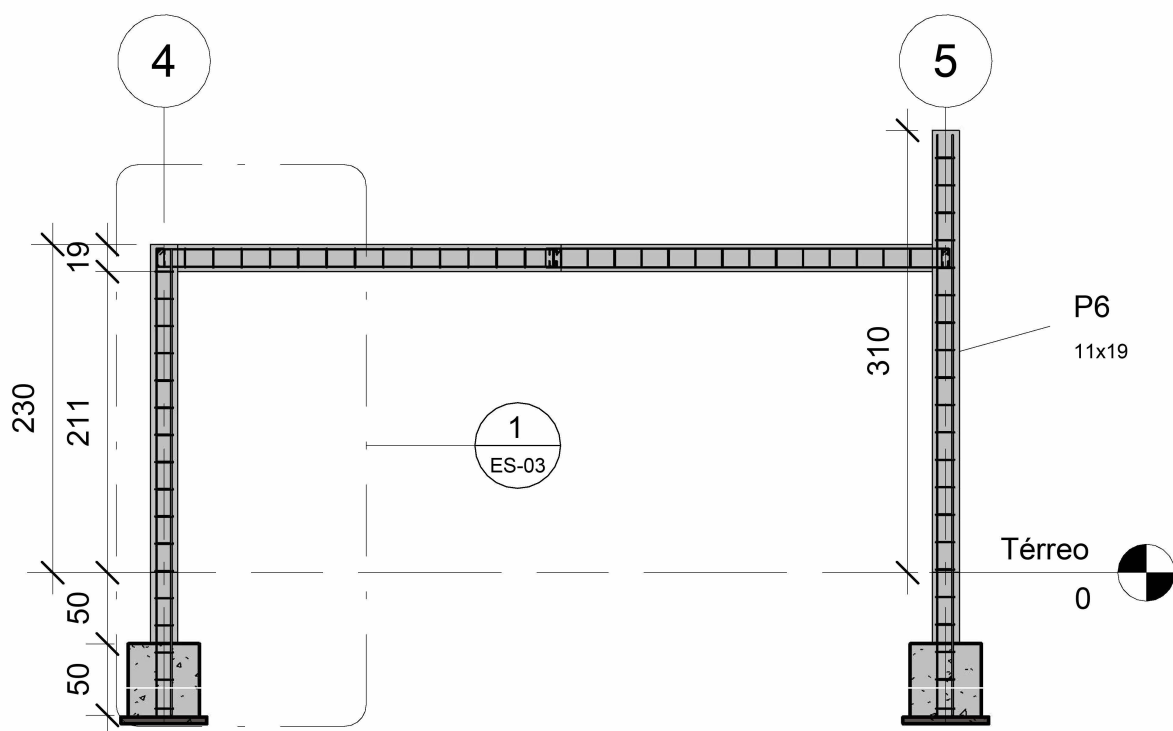
Nº DO PROJETO:
005

P2 / 04



1 Armadura Pilar e Viga

1 : 50



2 Vista Frontal

1 : 50

OBRA:
PROJETO MCMV - FNHIS

ESTRUTURAL

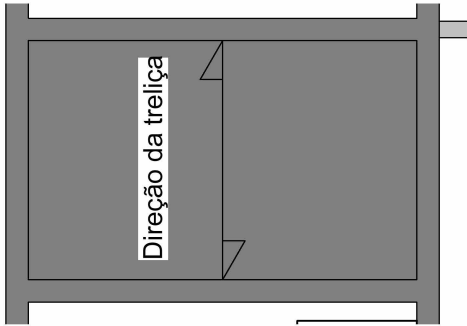
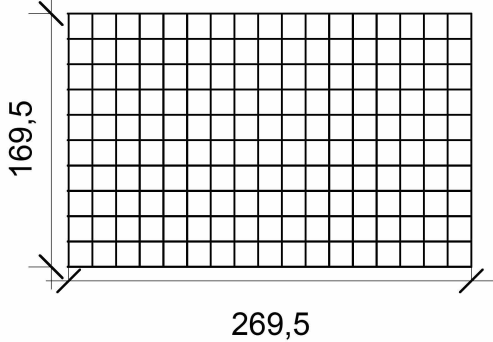
CONTEÚDO DA PRANCHA:
CORTES

DATA:
08/05/2025

Nº DO PROJETO:
005

P3 / 04

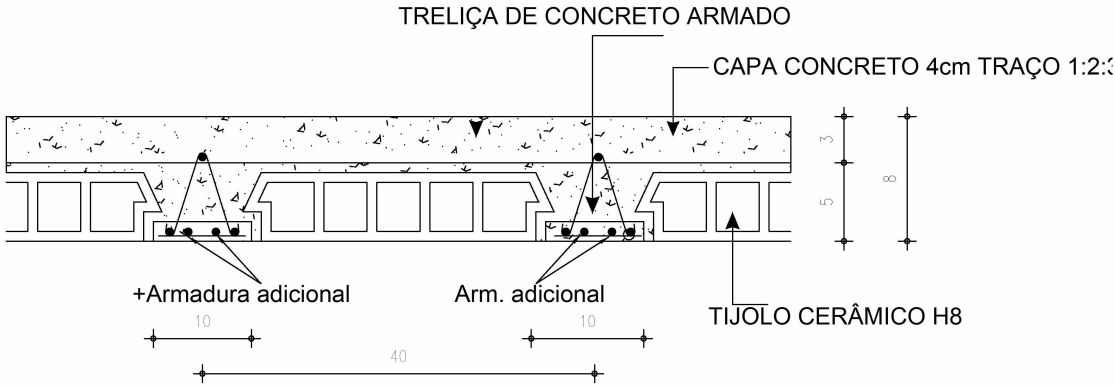
Tela malha pop eletrosoldada 170x270 cm
Malha 15x15cm Ø3,40 mm CA-60



1 Armadura Laje
1 : 50

2 Superior
1 : 50

CORTE GENÉRICO DAS LAJES (h=12 cm)



3 Detalhe Laje
1 : 75

	OBRA: PROJETO MCMV - FNHIS		
	ESTRUTURAL	CONTEÚDO DA PRANCHA: LAJES	
		DATA: 08/05/2025	
		Nº DO PROJETO: 005	P4 / 04